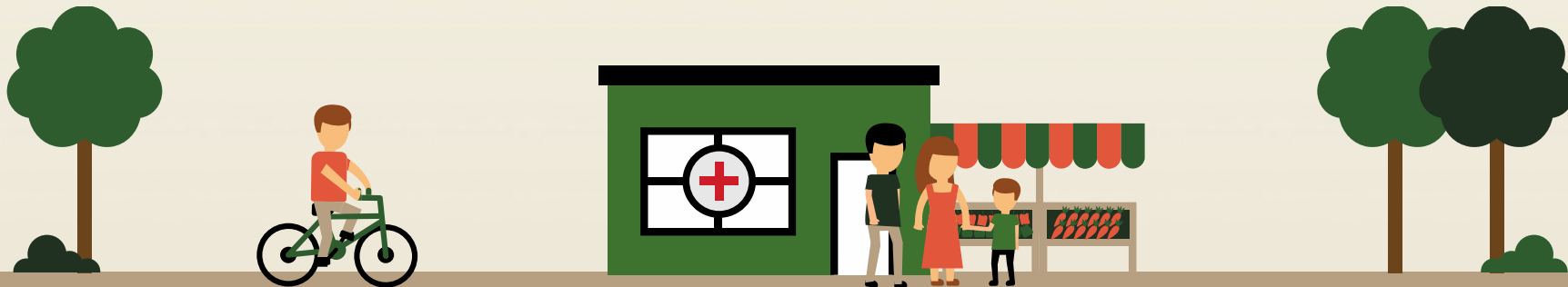




IMPACT KANSAS

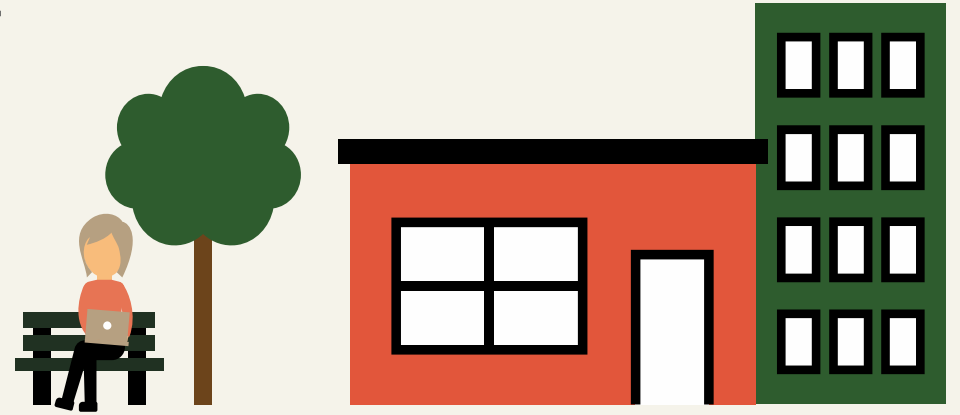
BUILDING RESOURCES FOR IMPACT

Presented By:
Steve Radley, President & CEO
NetWork Kansas



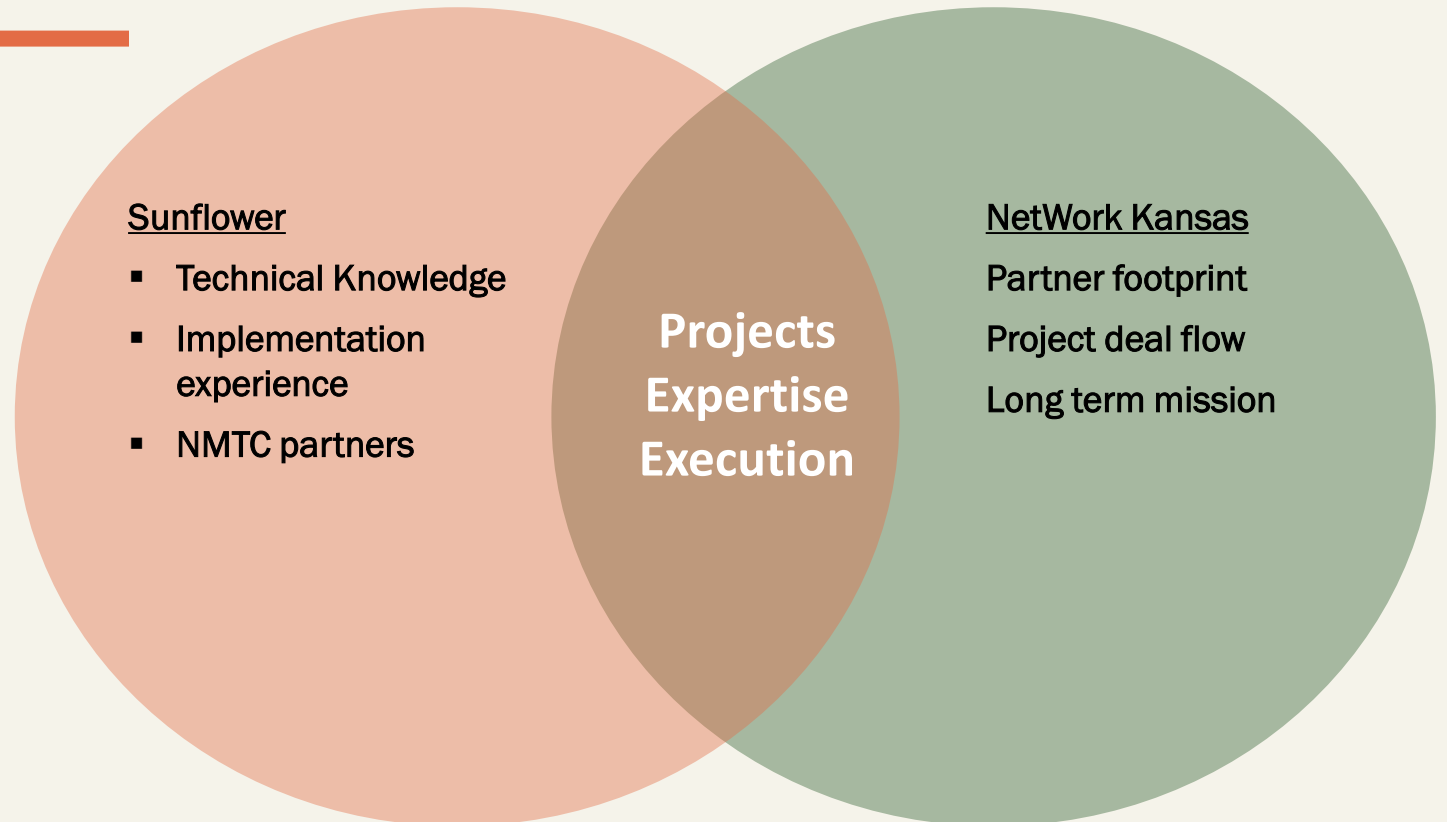
Impact Kansas

- Who we are
- A newly formed rural Certified Development Entity (CDE)
- Partners are NetWork Kansas and Sunflower Community Investment
- NetWork Kansas is the controlling entity

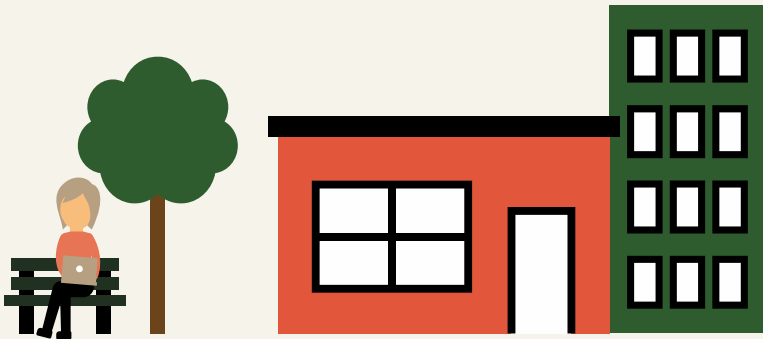


Impact Kansas *Long term partnership to build economic infrastructure*

1. New Market Tax Credit Application
2. \$70 million application
3. \$52.5 million infrastructure projects
4. \$17.5 million Kansas Entrepreneurial Fund



Why NetWork Kansas



Impact Kansas: While We Wait

- Continue to work the pipeline
- Build out new opportunities for capital and infrastructure through new partnerships
- Get smarter about what we're doing



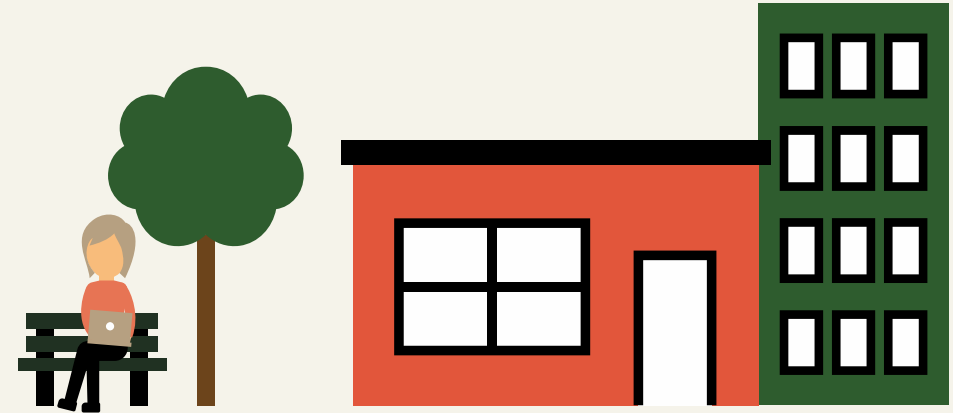
Impact Kansas: Trending Opportunities

- Growing partnership with the Kansas Health Foundation
- Kansas Healthy Food Initiative (\$3 million)
- Kansas Community Investment Fund (\$3 million)
- Kansas Community Philanthropy Innovators Network (CPIN): Community Foundations considering business investment



Entrepreneurship Tax Credit

- One More Ask
- Fundraising mode for Entrepreneurship Tax Credits
- Banks can now participate
- Corporations also targeted (C-Corps)
- Referrals to Steve Radley or Erik Pedersen



Thank You

 Facebook: [/networkkansas](https://www.facebook.com/networkkansas)

 Twitter: [@networkkansas](https://twitter.com/networkkansas) [@steveradley3](https://twitter.com/steveradley3)

 LinkedIn: [NetWork Kansas](https://www.linkedin.com/company/network-kansas)

E-mail: sradley@networkkansas.com

www.networkkansas.com

